



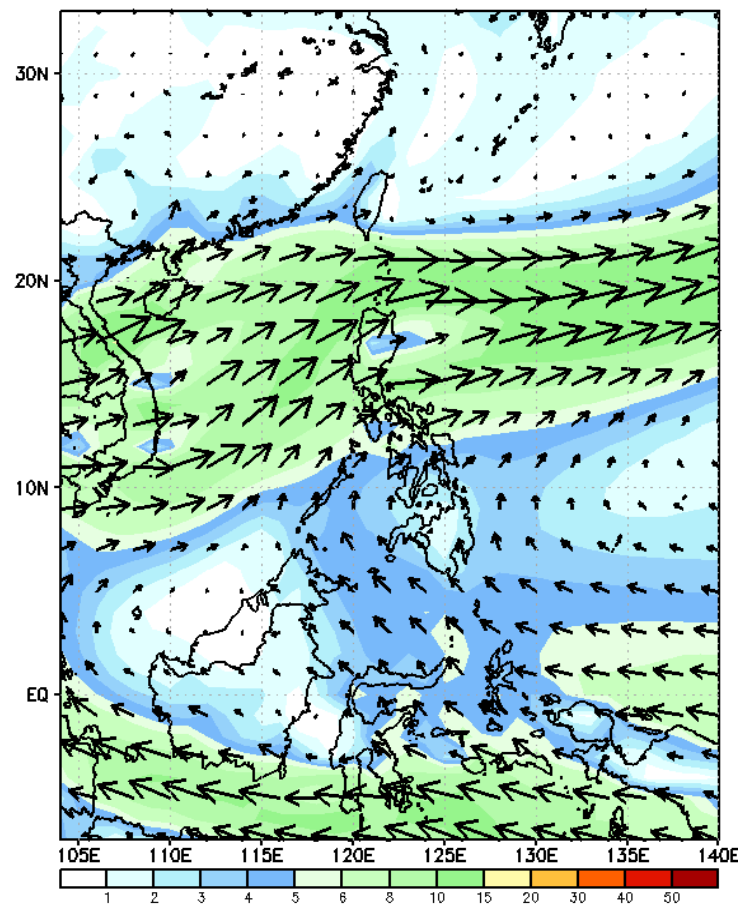
Week 1 & Week 2 Forecast for the Philippines using GEFS Model



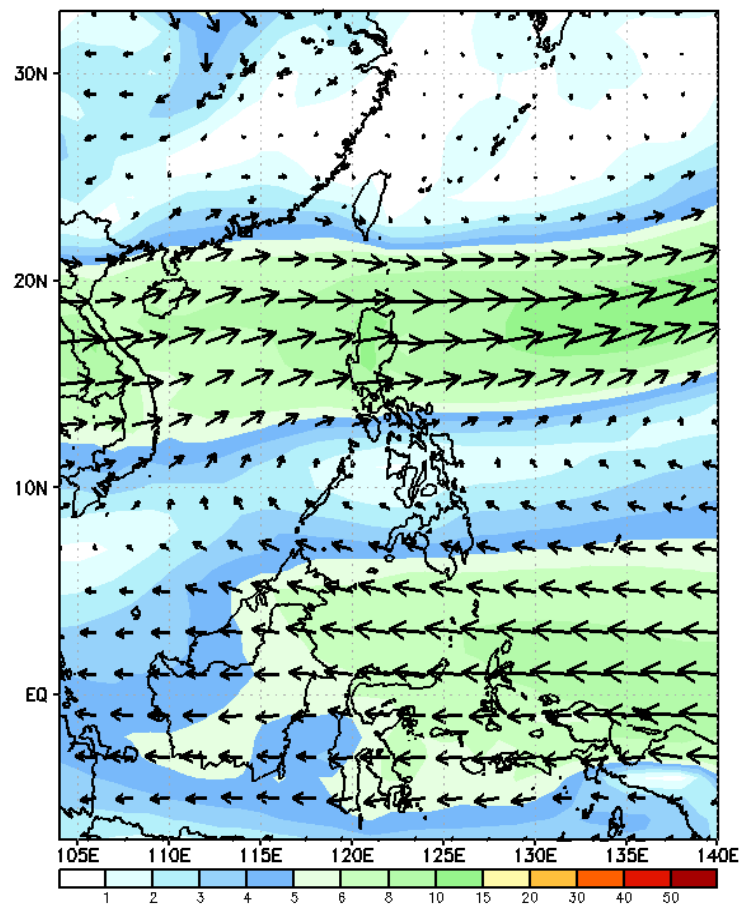
GEFS Week-1 Wind Forecasts:

Week 1: Aug 09-15, 2024

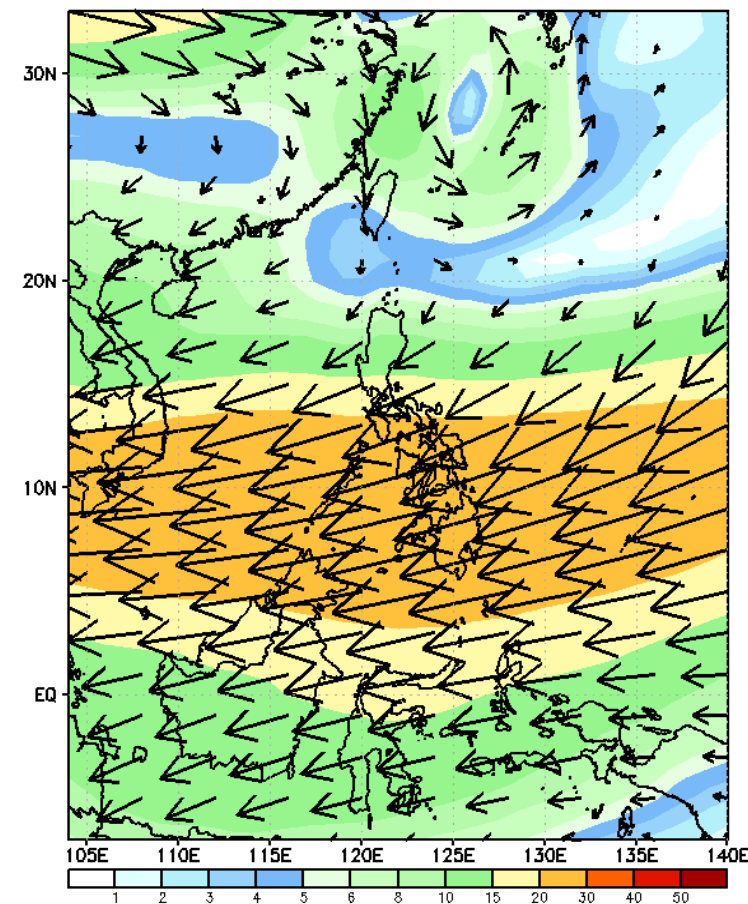
GEFS Week-1 850-hPa Wind Total
Valid: 20240809 - 20240815



GEFS Week-1 700-hPa Wind Total
Valid: 20240809 - 20240815

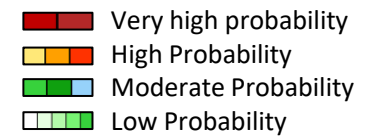


GEFS Week-1 200-hPa Wind Total
Valid: 20240809 - 20240815



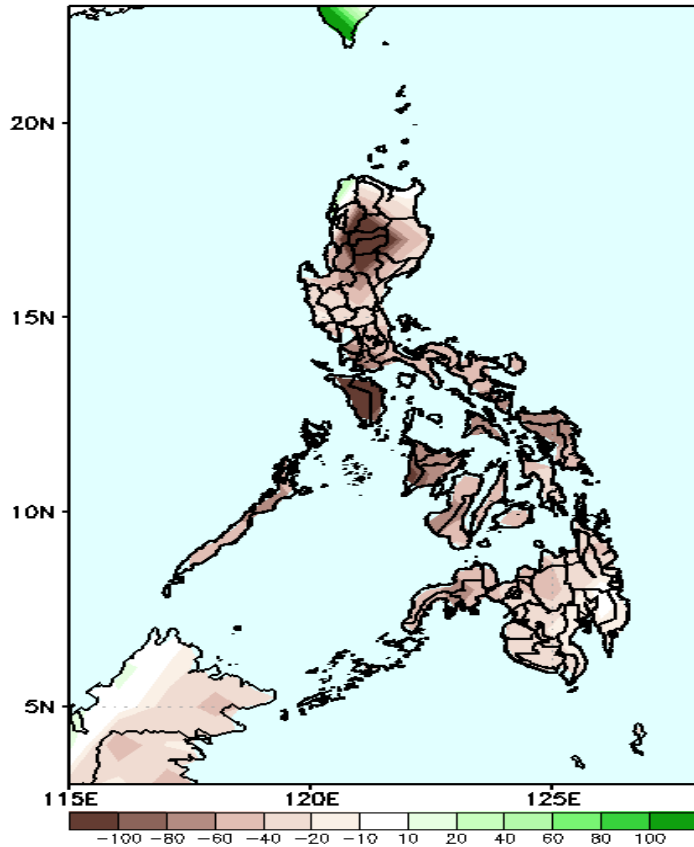
Southwest Monsoon affecting the western sections of Luzon and Visayas. Easterlies affecting the rest of the country during the forecast period

Precipitation Anomaly and Exceedance Probability > 25/50 mm



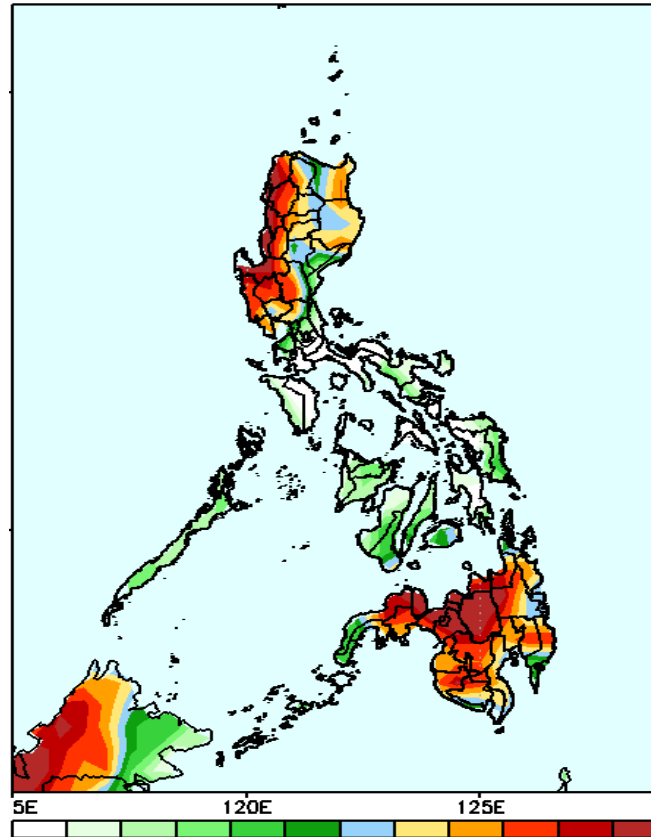
Week 1: Aug 09-15, 2024

GEFS Week-1 Precip Anomaly
Valid: 20240809 - 20240815



Rainfall deficit of more than 100mm in most of CAR and Mindoro Provinces and 20-100mm for the rest of the country

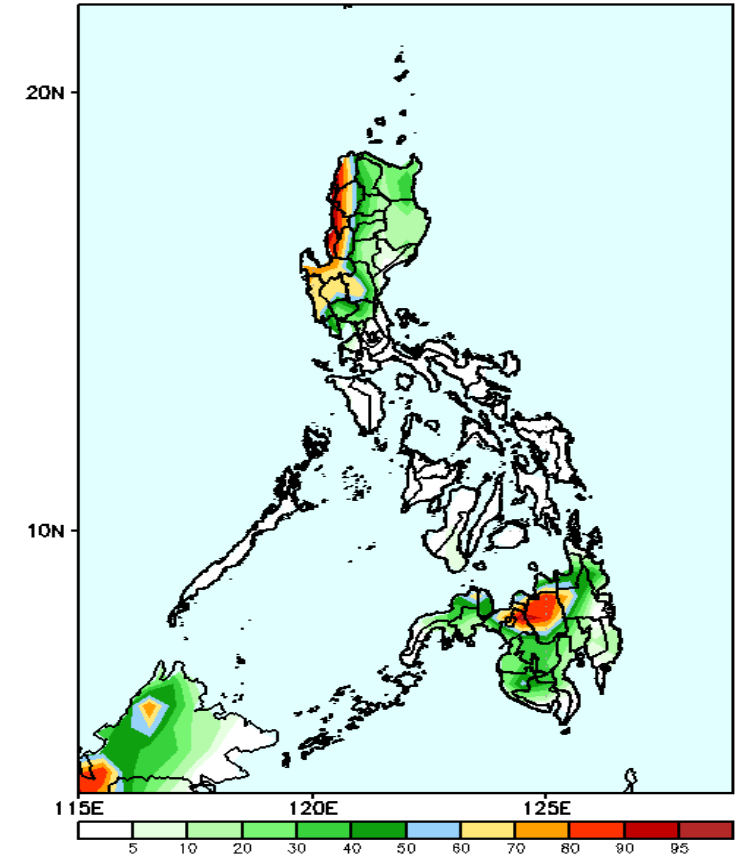
GEFS Week-1 Exceedance Prob. > 25mm
Valid: 20240809 - 20240815



Probability to Exceed 25mm

- High to very high over Ilocos Region, Abra, Benguet, Northern Mindanao and the eastern section of Zamboanga Peninsula;
- Moderate to high over the rest of Northern and Central Luzon and Mindanao;
- Low to moderate over Visayas and the rest of Luzon

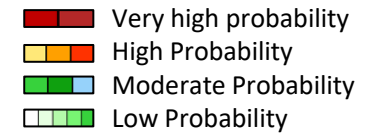
GEFS Week-1 Exceedance Prob. > 50mm
Valid: 20240809 - 20240815



Probability to Exceed 50mm

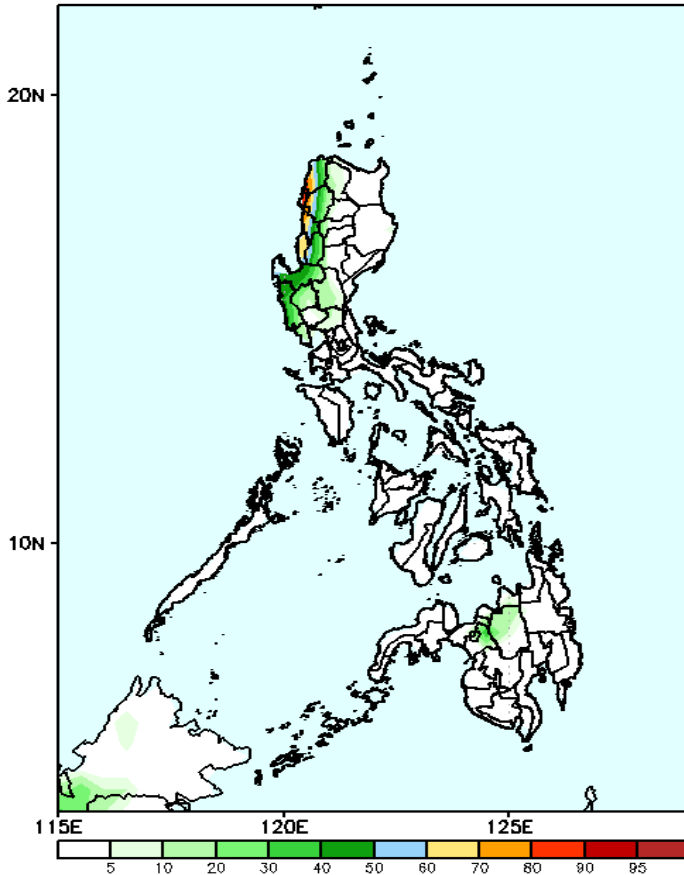
- Moderate to high over Ilocos Region, most of Central Luzon, Bukidnon, Lanao Provinces and western portion of Agusan del Sur;
- Low to moderate over the rest of Northern and Central Luzon and Mindanao;
- Low over the rest of the country.

Exceedance Probability > 100/150/200 mm



Week 1: Aug 09-15, 2024

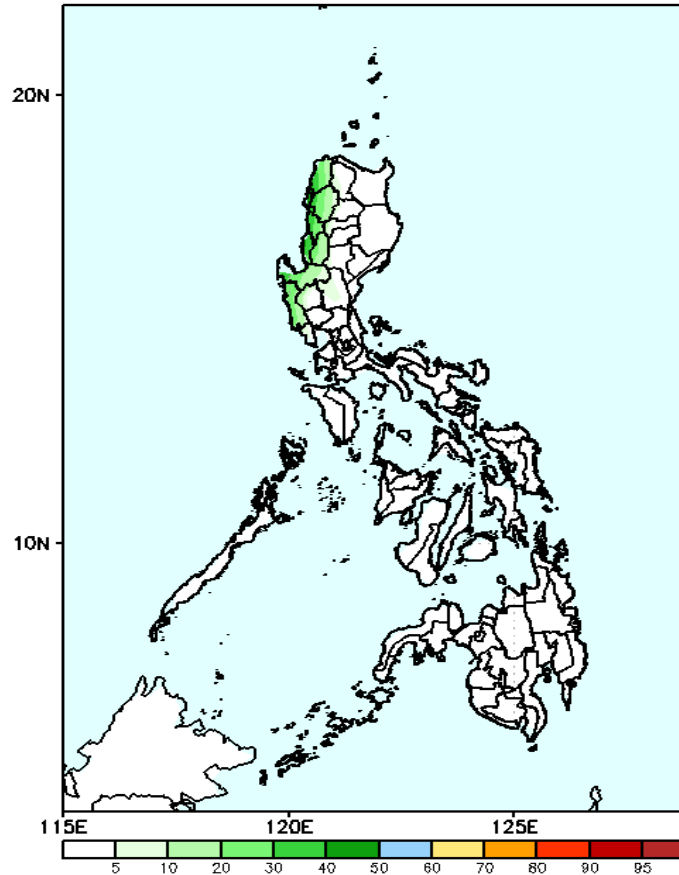
GEFS Week-1 Exceedance Prob. > 100mm
Valid: 20240809 - 20240815



Probability to Exceed 100mm

- Moderate to high over the western portion of the Ilocos Region;
- Low to moderate over Zambales, Benguet, and Abra;
- Low over the rest of the country.

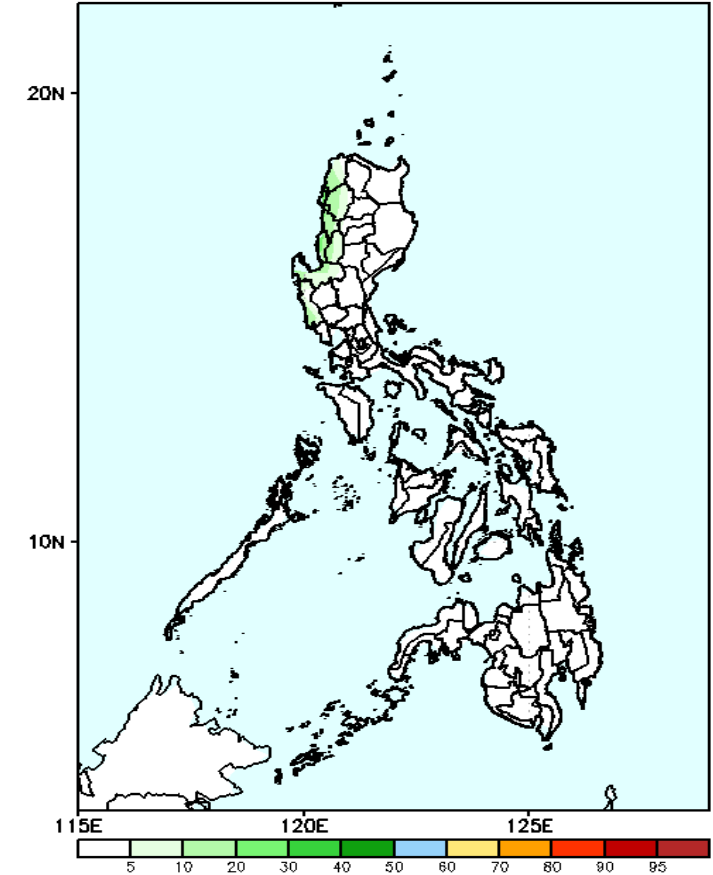
GEFS Week-1 Exceedance Prob. > 150mm
Valid: 20240809 - 20240815



Probability to Exceed 150mm

- Low across the country.

GEFS Week-1 Exceedance Prob. > 200mm
Valid: 20240809 - 20240815



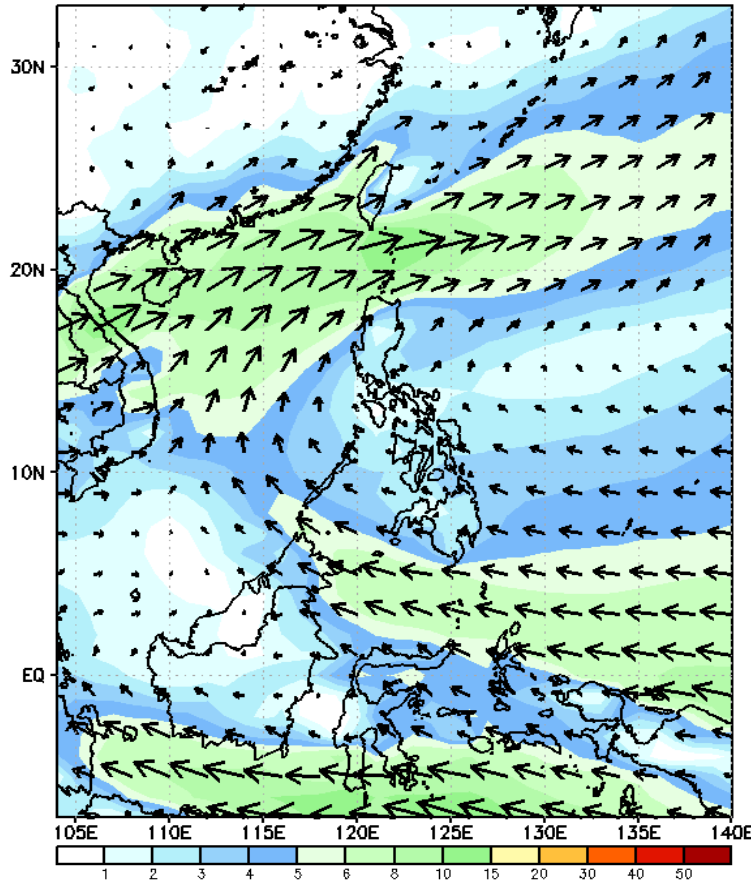
Probability to Exceed 200mm

- Low across the country.

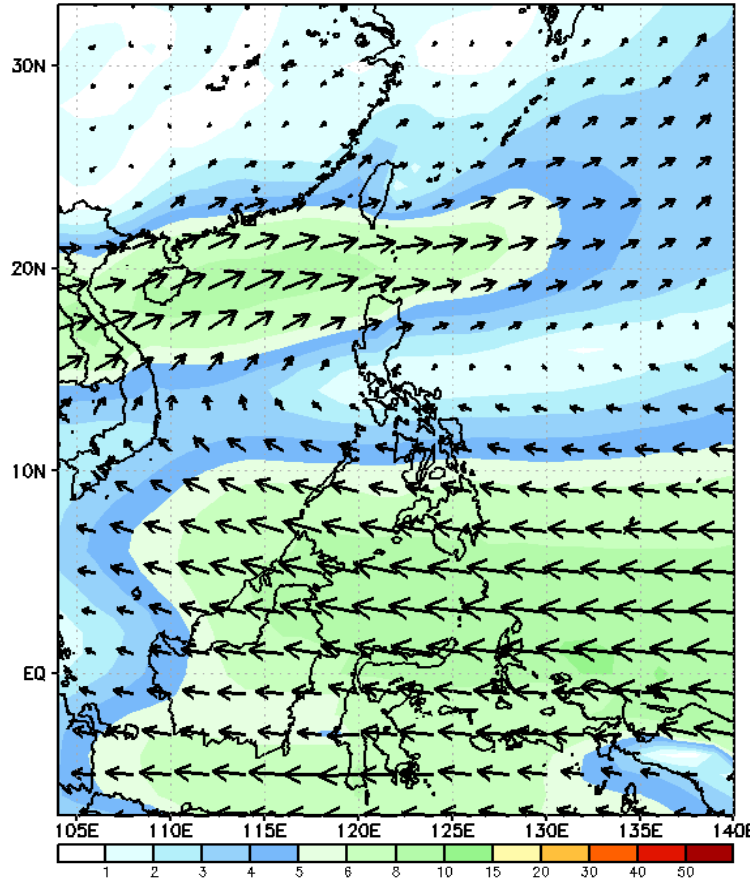
GEFS Week-2 Wind Forecasts:

Week 2: Aug 16-22, 2024

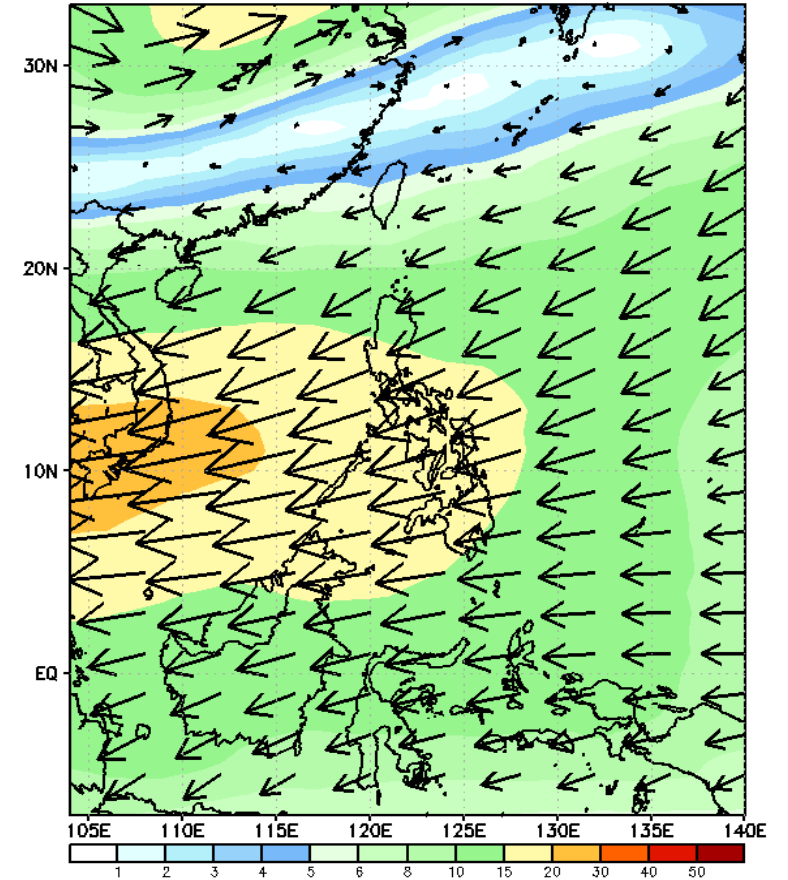
GEFS Week-2 850-hPa Wind Total
Valid: 20240816 - 20240822



GEFS Week-2 700-hPa Wind Total
Valid: 20240816 - 20240822

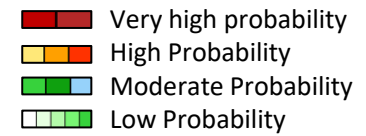


GEFS Week-2 200-hPa Wind Total
Valid: 20240816 - 20240822



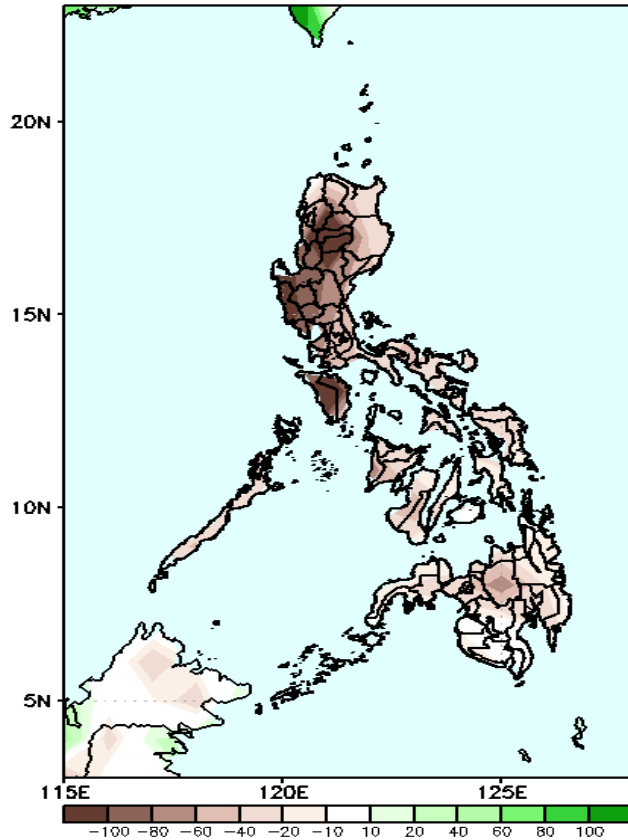
Southwest Monsoon affecting some areas in Western Luzon. Easterlies affecting the rest of the country during the forecast period

Precipitation Anomaly and Exceedance Probability > 25/50 mm

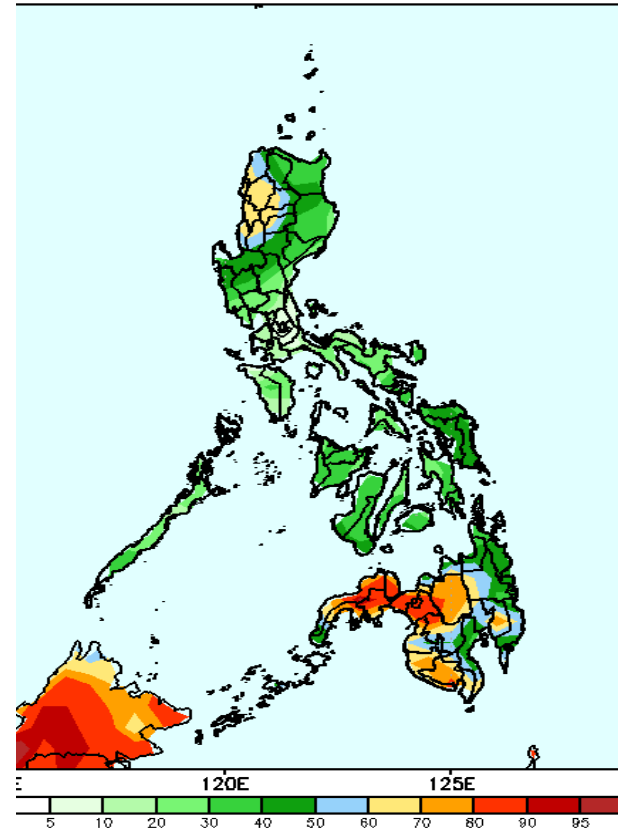


Week 2: Aug 16-22, 2024

GEFS Week-2 Precip Anomaly
Valid: 20240816 - 20240822



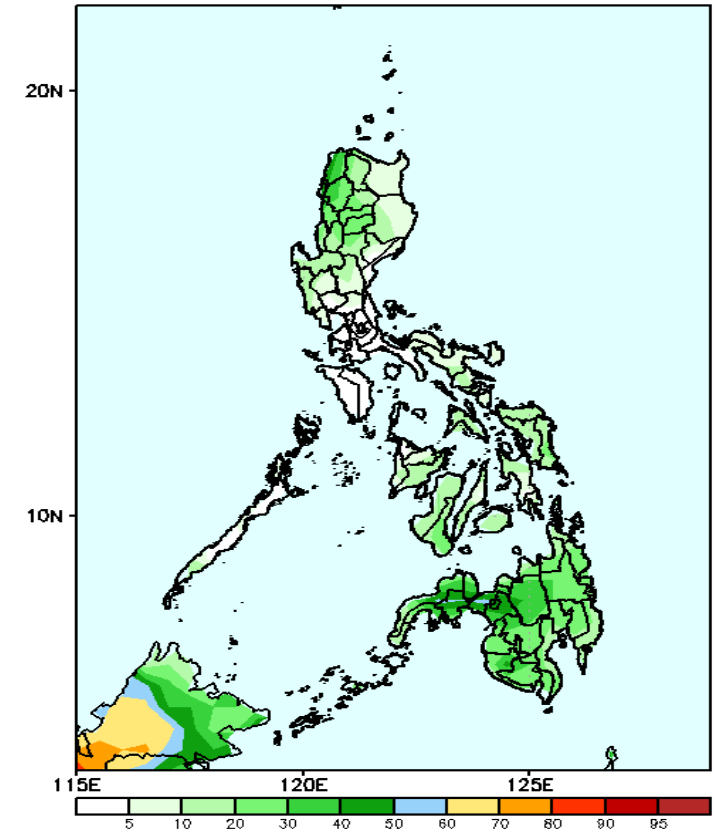
GEFS Week-2 Exceedance Prob. > 25mm
Valid: 20240816 - 20240822



Probability to Exceed 25mm

- Moderate to high over Ilocos Region, CAR and most of Mindanao;
- Low to moderate over the rest of the country.

GEFS Week-2 Exceedance Prob. > 50mm
Valid: 20240816 - 20240822

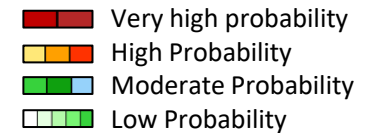


Probability to Exceed 50mm

- Low to moderate across the country.

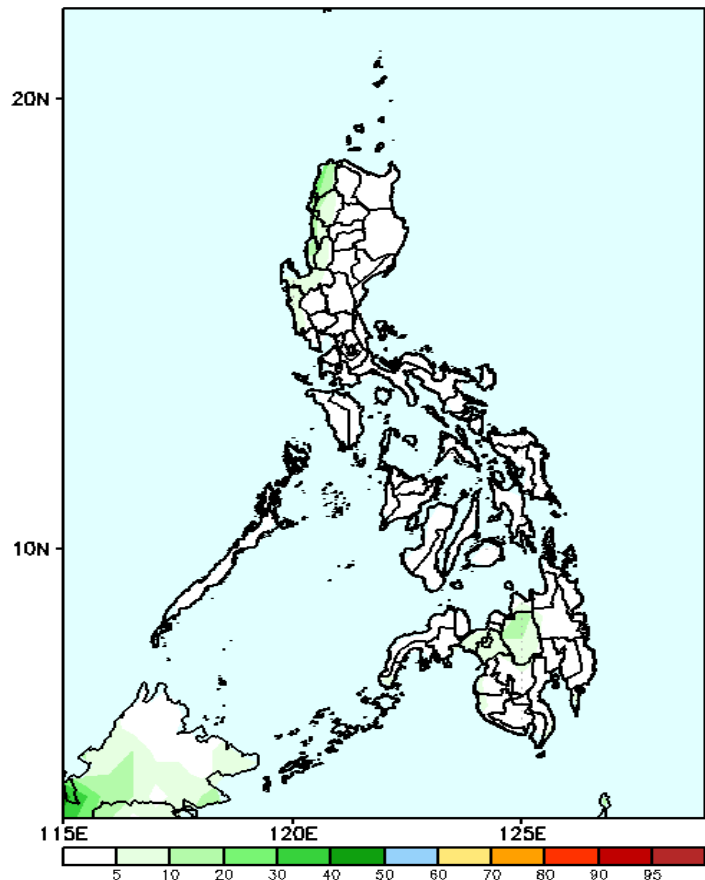
Rainfall deficit of more than 100mm in most of CAR and western Luzon and 20-100mm for the rest of the country

Exceedance Probability > 100/150/200 mm



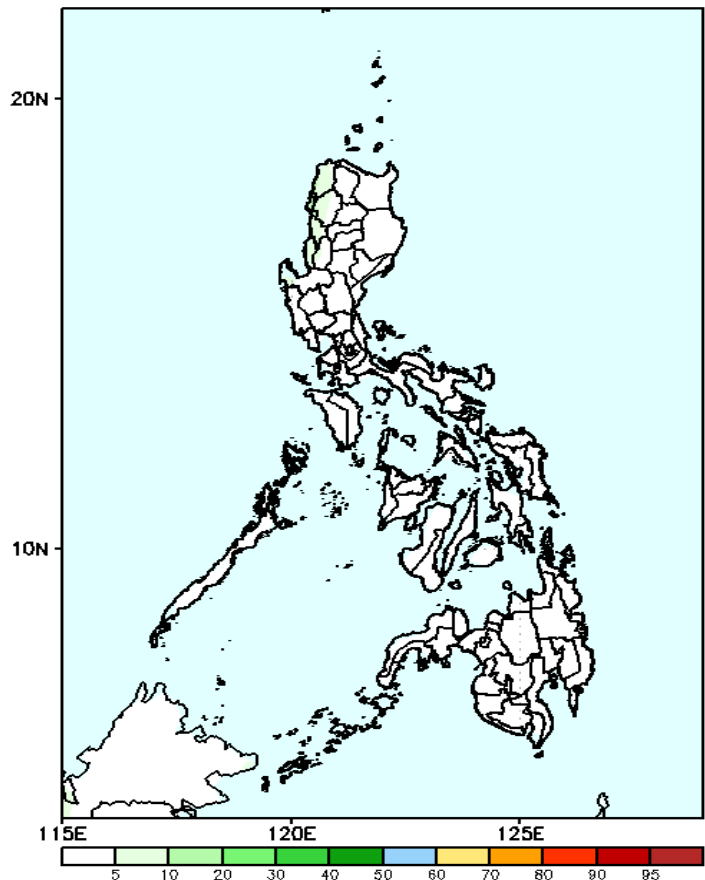
Week 2: Aug 16-22, 2024

GEFS Week-2 Exceedance Prob. > 100mm
Valid: 20240816 - 20240822



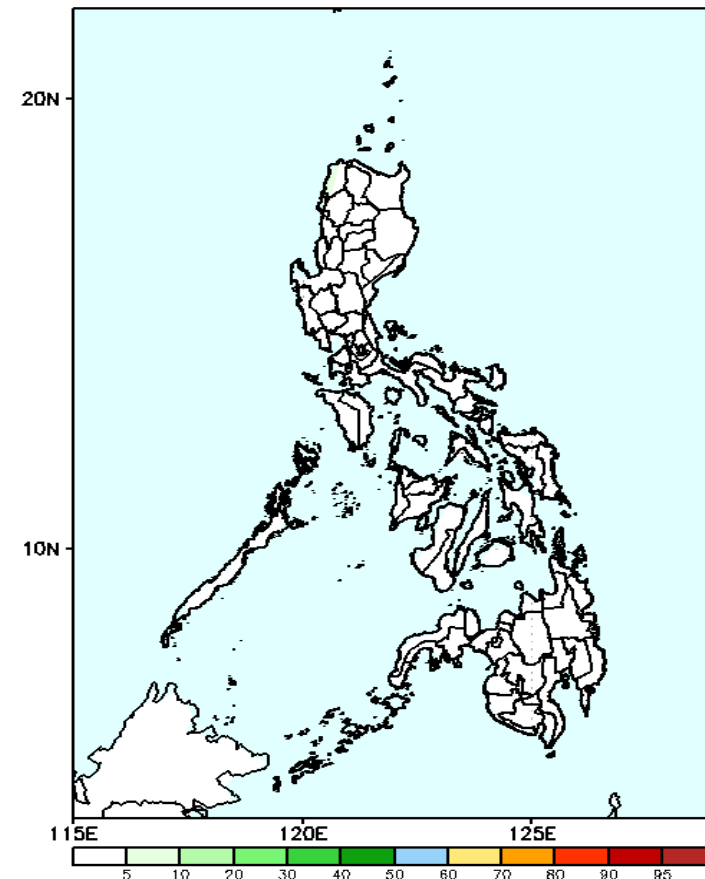
Probability to Exceed 100mm
• Low probability across the country.

GEFS Week-2 Exceedance Prob. > 150mm
Valid: 20240816 - 20240822



Probability to Exceed 150mm
• Low probability across the country.

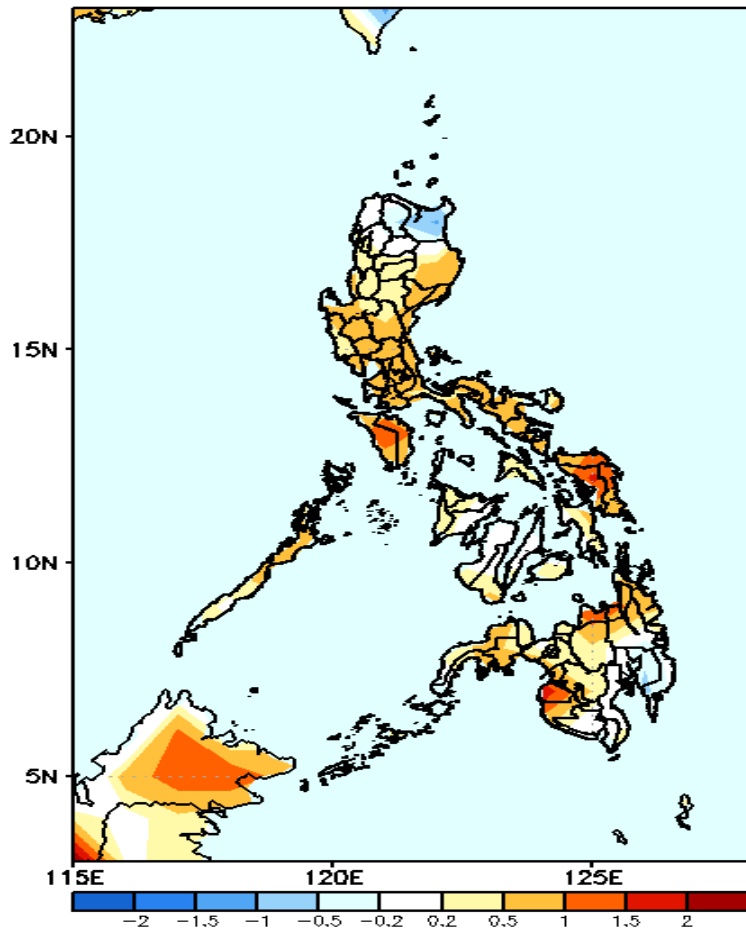
GEFS Week-2 Exceedance Prob. > 200mm
Valid: 20240816 - 20240822



Probability to Exceed 200mm
• Low probability across the country.

GEFS Week-1 & 2 Forecasts: T2m Anomaly

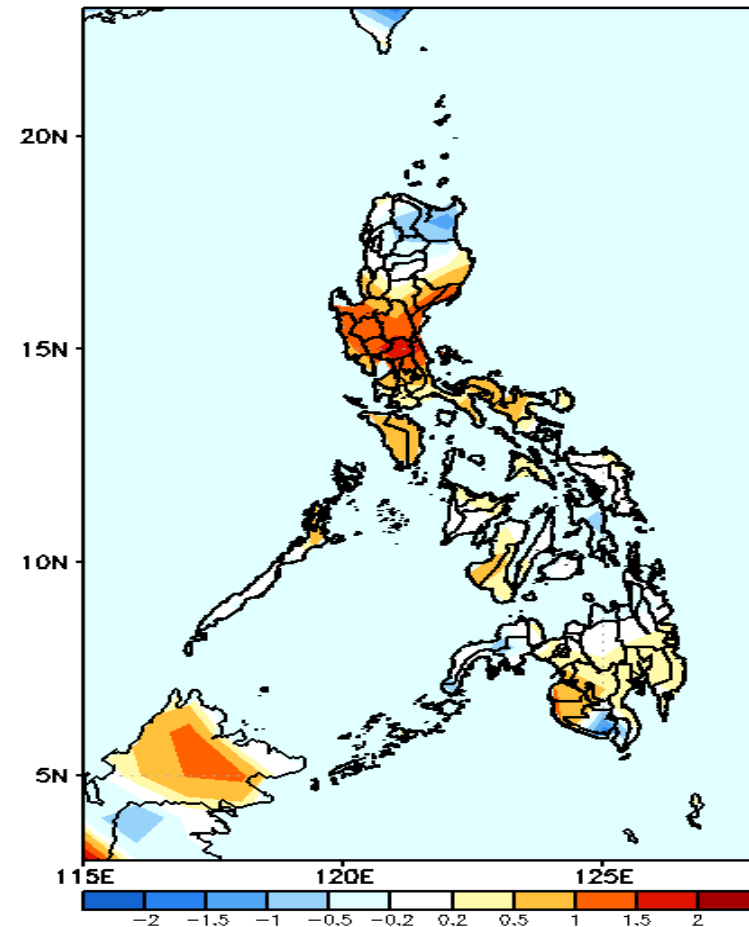
GEFS Week-1 T2m Anomaly
Valid: 20240809 – 20240815



2m Temperature Week 1: Aug 09-15, 2024

Near to warmer surface air temperature will likely be experienced in most parts of the country except in Cagayan where slightly cooler than average surface air temperature is expected.

GEFS Week-2 T2m Anomaly
Valid: 20240816 – 20240822



2m Temperature Week 2: Aug 16-22, 2024

Near to warmer surface air temperature will likely be experienced in most parts of the country except in Cagayan, Apayao, and South Cotabato where slightly cooler than average surface air temperature is expected.